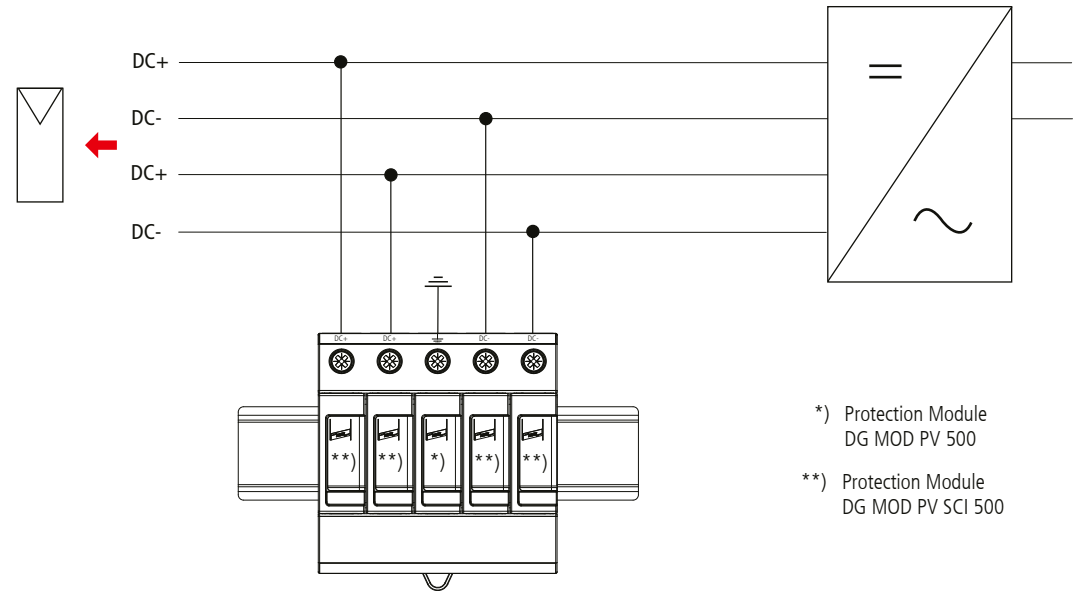
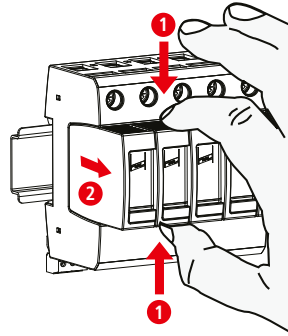
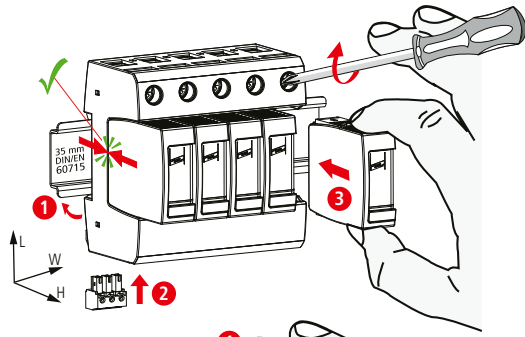


DEHNguard DG M PV2 SCI 1000 (FM)

- DE Einbauanleitung
- GB Installation instructions
- IT Istruzioni di montaggio
- FR Instructions de montage
- NL Montagehandleiding
- ES Instrucciones de montaje
- PT Instruções de montagem
- DK Monteringsvejledning
- SE Monteringsanvisning
- FI Asennusohje
- GR Οδηγίες συναρμολόγησης
- PL Instrukcja montażu
- CZ Montážní návod
- TR Kurulum Talimatları
- RU Инструкция по монтажу
- CN 安装说明
- HU Szerelési útmutató
- JP 設置説明書

SPD Type 2 - according to EN50539-11

PZ 2 (4 Nm)

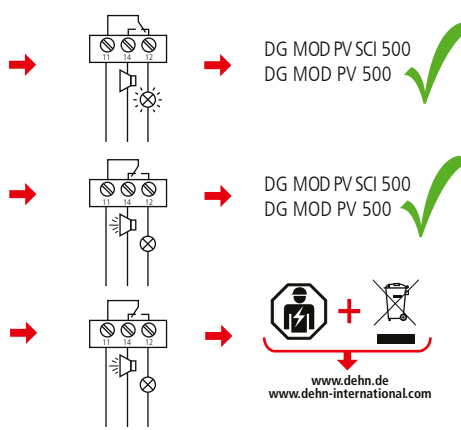
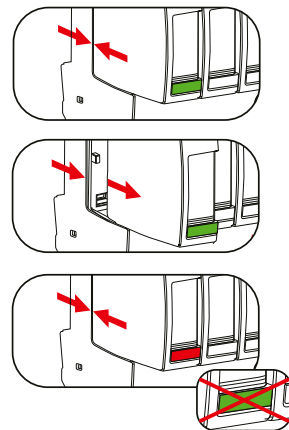


*) Protection Module
DG MOD PV 500

***) Protection Module
DG MOD PV SCI 500

DG M PV2 SCI 1000 (FM)	
DG MOD PV SCI 500 / DG MOD PV 500	
U_{CPV}	≤ 1000 V DC
I_{total}	40 kA (8/20)
I_{max}	25 kA (8/20)
I_{scpv}	10 kA
$I_{PE, AC}$	≤ 1 mA
$I_{PE, DC}$	≤ 50 μ A
θ	-40°C ... +80°C
Φ	5% ... 95%
IP 1)	20
failure behavior/ Ausfallverhalten	open circuit / Abtrennung
L x W x H	90 mm x 90 mm x 73 mm

min. □ DC+, DC-, \perp	1.5 mm ²	12 mm	12 mm	12 mm
max. □ DC+, DC-, \perp	25 mm ²	35 mm ²		
□	16 mm ² Cu		≤ 15.5 mm	



DEHNguard
DG M PV2 SCI 1000 FM

U_N / I_N	AC: 250 V / 0.5 A
	DC: 250 V / 0.1 A 125 V / 0.2 A 75 V / 0.5 A

0.2 Nm

max. 1.5 mm²

www.dehn.de
www.dehn-international.com

