

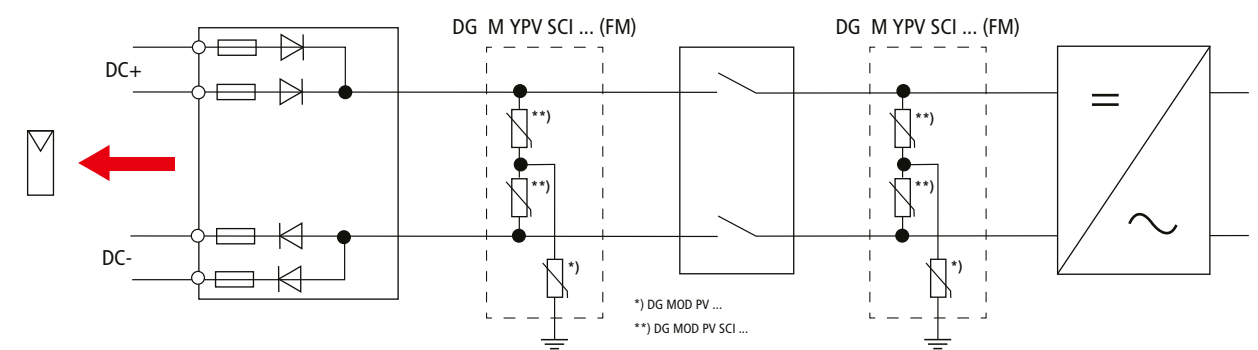
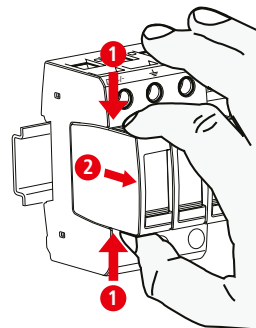
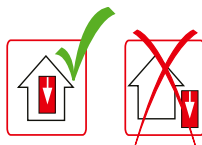
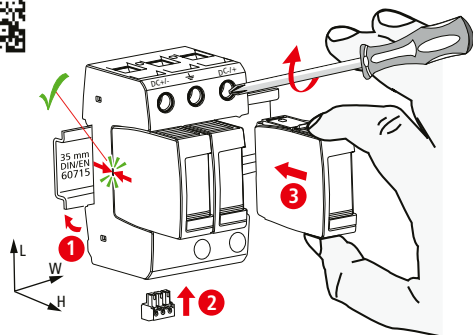
DEHNguard M YPV SCI ... (FM)

- DE Einbauanleitung
- GB Installation instructions
- IT Istruzioni di montaggio
- FR Instructions de montage
- NL Montagehandleiding
- ES Instrucciones de montaje
- PT Instruções de montagem
- DK Monteringsvejledning
- SE Monteringsanvisning
- FI Asennusohje
- GR Οδηγίες συναρμολόγησης
- PL Instrukcja montażu
- CZ Návod k montáži
- TR Montaj kılavuzu
- RU Инструкция по монтажу
- CN 安装说明
- HU Szerelési útmutató
- JP 設置説明書

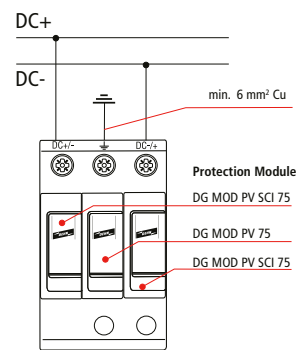


2 EN 50539-11...

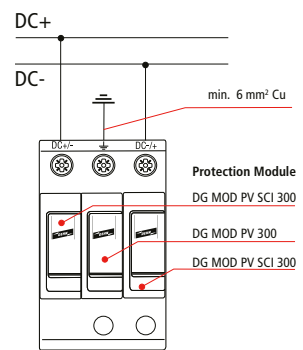
PZ 2 4 Nm



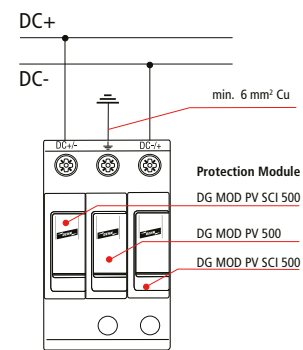
DG M YPV SCI 150 (FM)



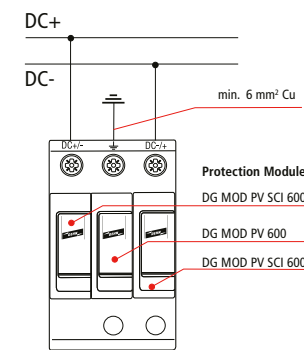
DG M YPV SCI 600 (FM)



DG M YPV SCI 1000 (FM)

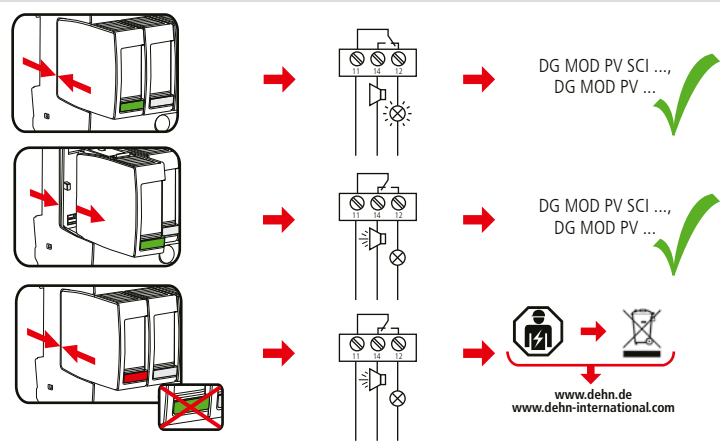


DG M YPV SCI 1200 (FM)



	DG M YPV SCI 150 (FM)	DG M YPV SCI 600 (FM)	DG M YPV SCI 1000 (FM)	DG M YPV SCI 1200 (FM)
U_{CPV}	≤ 150 V DC	≤ 600 V DC	≤ 1000 V DC	≤ 1200 V DC
I_{total}	20 kA (8/20)	40 kA (8/20)	25 kA (8/20)	30 kA (8/20)
I_{max}	20 kA (8/20)	40 kA (8/20)	25 kA (8/20)	30 kA (8/20)
I_{SCPV}		10 kA		
$I_{PE, AC}$		≤ 500 μA		
$I_{PE, DC}$		≤ 25 μA		
θ°		-40°C ... +80°C		
ϕ		5% ... 95%		
IP		20		
failure behavior		open circuit		
Ausfallverhalten		Abtrennung		
L x W x H		90 mm x 54 mm x 73 mm		

	min. □ DC+ / -, DC- / +, ±	max. □ DC+ / -, DC- / +, ±
	1.5 mm ²	25 mm ²
	16 mm ² Cu	35 mm ²
	12 mm	12 mm
	12 mm	12 mm
	12 mm	12 mm
	16 mm ² Cu	≤ 15.5 mm



DEHNguard M YPV SCI ... FM	
U_N / I_N	AC: 250 V / 0.5 A
	DC: 250 V / 0.1 A
	125 V / 0.2 A
	75 V / 0.5 A
	max. 1.5 mm ²

